

The LED patch cable

The LED patch cable has been developed for use in offices, in industry and in computer centres.

Features

| | |
|--------------------|--|
| Sheath | FRNC, IEC 60332-1-2, IEC 60754, IEC61034 |
| EMC | combined shield (pimf + braiding) |
| Plug | According to EN 60603-7-5 with 360° shielding for Cat.6A |
| Length restriction | Optical detection up to 100 m |

Colours and Marking

We can supply the LED patch cable according to your requirements and specifications with your individual marking and in the following colours.

| | | |
|--|-----------------|-----------|
|  | Signal white | RAL 9003* |
|  | Light grey | RAL 7035* |
|  | Signal black | RAL 9004* |
|  | Heather violet | RAL 4003* |
|  | Flame red | RAL 3000* |
|  | Pastel orange | RAL 2003* |
|  | Colza yellow | RAL1021* |
|  | Turquoise green | RAL 6016* |
|  | Light green | RAL 6027* |
|  | Sky blue | RAL 5015* |

*The manufacturers warrant only approximate values of the colour shades.

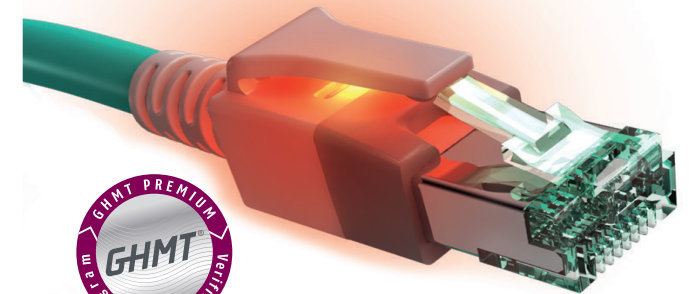
Communication Cabling and Network Technology

- Consulting, planning & implementation of:
 - Equipment rooms & data centers / enclosures
 - Individual data center visualizations in 3D
 - Preparation of contract specifications
 - LAN / WAN installation (office, industry)
 - WLAN coverage
 - Hardware procurement (HP, Dell, Cisco Partner)
 - IP telephony
 - Camera surveillance
 - Relocation management for technical equipment
 - Accident prevention inspections to DGUV V3
 - Cabling for media technology & conference room equipment (HD Base T, HDMI, DVI)
 - Technical building documentation in AutoCAD & FNT Command
 - Structural & technical baseline studies
 - Fire fighting, escape and rescue route plans
- Data center check
- EnviMonitor DCIM software
- Engineering of 19" racks, cabinets, panels
- Sale of individual 19" solutions
- Network analysis, troubleshooting
- Training
- 24-hour service



The New Category 6A LED Patch Cable

dtm.group
IT MANIFAKTUR



Light up and see!



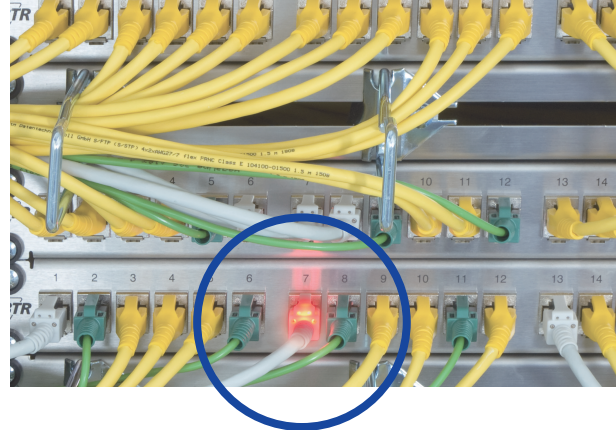
So easy ...

Simply insert the detector into the RJ45 plug and press the button ...



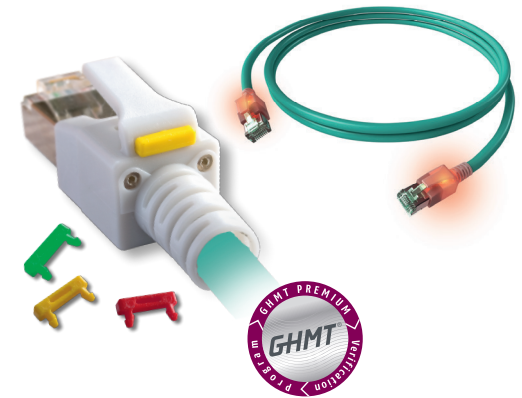
... and so helpful

... and the other end of the patch cable responds with a light signal.



Marking + RFID

Colour coding elements snap in above the bend protection sleeve of the plug for marking purposes.



The detector

Insert the detector into the contact pair at the back of the RJ45 plug.

Press the button on the detector to switch on the identification light. You can choose from various light signal modes (light on, flashing slowly, flashing rapidly). This allows you to choose the convenient mode for the actual lighting conditions.

The LED patch cable

Besides the special light identification feature, the LED patch cable offers everything you would expect from a high-quality patch cable today: halogen-free, shielded, Cat.6A, 500MHz. Only high-quality brand cables with a bandwidth of 900 MHz from these manufacturers are used: Corning, Draka, Leoni.

The combined shield (PiMF & braiding) and the 360° shielded RJ45 plugs provide a maximum level of data security.

Marking clip

Coloured clips snap into the RJ45 plug for marking purposes.

RFID included

The coloured marking clip can optionally be equipped with an RFID chip. This allows automatic identification and saving of the patch cable ID.